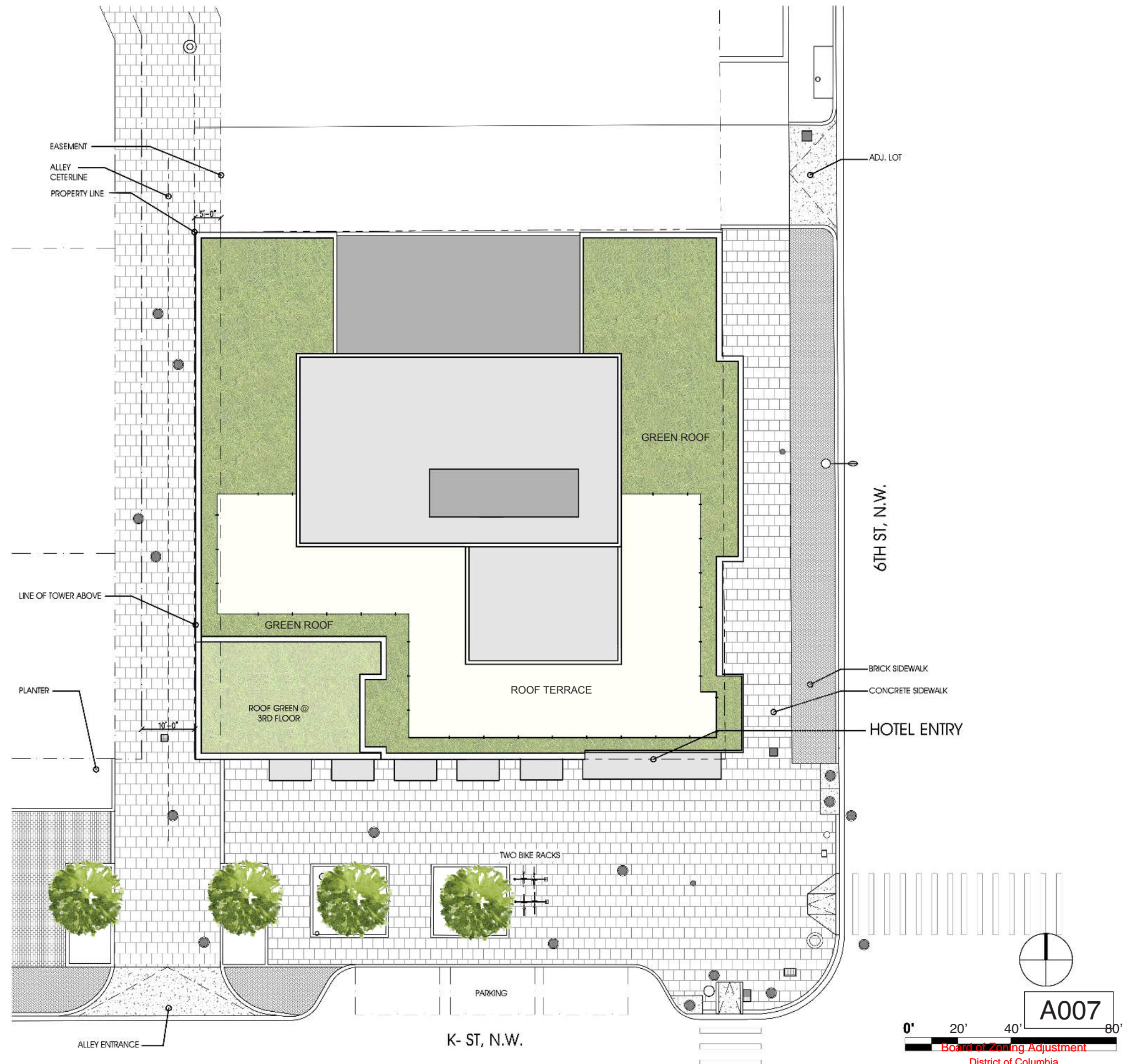


BUILDING PROGRAM	ZONING AREA SUMMARY
CELLAR	0
GROUND	8,280 SF
2ND FLOOR	7,696 SF 16KEYS
3RD FLOOR	8,369 SF 18 KEYS
4TH FLOOR	8,077 SF (EXCLUDING 4' BAY PROJECTION) 17 KEYS
5TH FLOOR	8,077 SF (EXCLUDING 4' BAY PROJECTION) 20 KEYS
6TH FLOOR	8,077 SF (EXCLUDING 4' BAY PROJECTION) 20 KEYS
7TH FLOOR	8,077 SF (EXCLUDING 4' BAY PROJECTION) 20 KEYS
8TH FLOOR	8,077 SF (EXCLUDING 4' BAY PROJECTION) 20 KEYS
9TH FLOOR	8,077 SF (EXCLUDING 4' BAY PROJECTION) 20 KEYS
10TH FLOOR	8,077 SF (EXCLUDING 4' BAY PROJECTION) 20 KEYS
11TH FLOOR	8,077 SF (EXCLUDING 4' BAY PROJECTION) 20 KEYS
12TH FLOOR	8,077 SF (EXCLUDING 4' BAY PROJECTION) 20 KEYS
13TH FLOOR	8,077 SF (EXCLUDING 4' BAY PROJECTION) 20 KEYS
PENTHOUSE	0
TOTAL AREA:	105,115 SF (EXCLUDING CELLAR, PENTHOUSE & 4' BAY PROJECTION)
FAR: 10.50 (EXCLUDING CELLAR, PENTHOUSE & 4' BAY PROJECTION)	
SITE AREA	10,011 SF (BASED ON THE ALTA SURVEY CAD FILE)
TOTAL GUEST ROOMS : 231*	(* Total number of keys subject to flexibility of final design)
GROSS BUILDING AREA :	122,014 SF (INCLUDING CELLAR, PENTHOUSE & 4' BAY PROJECTION)



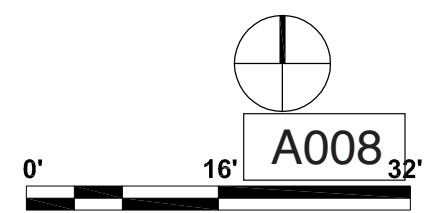
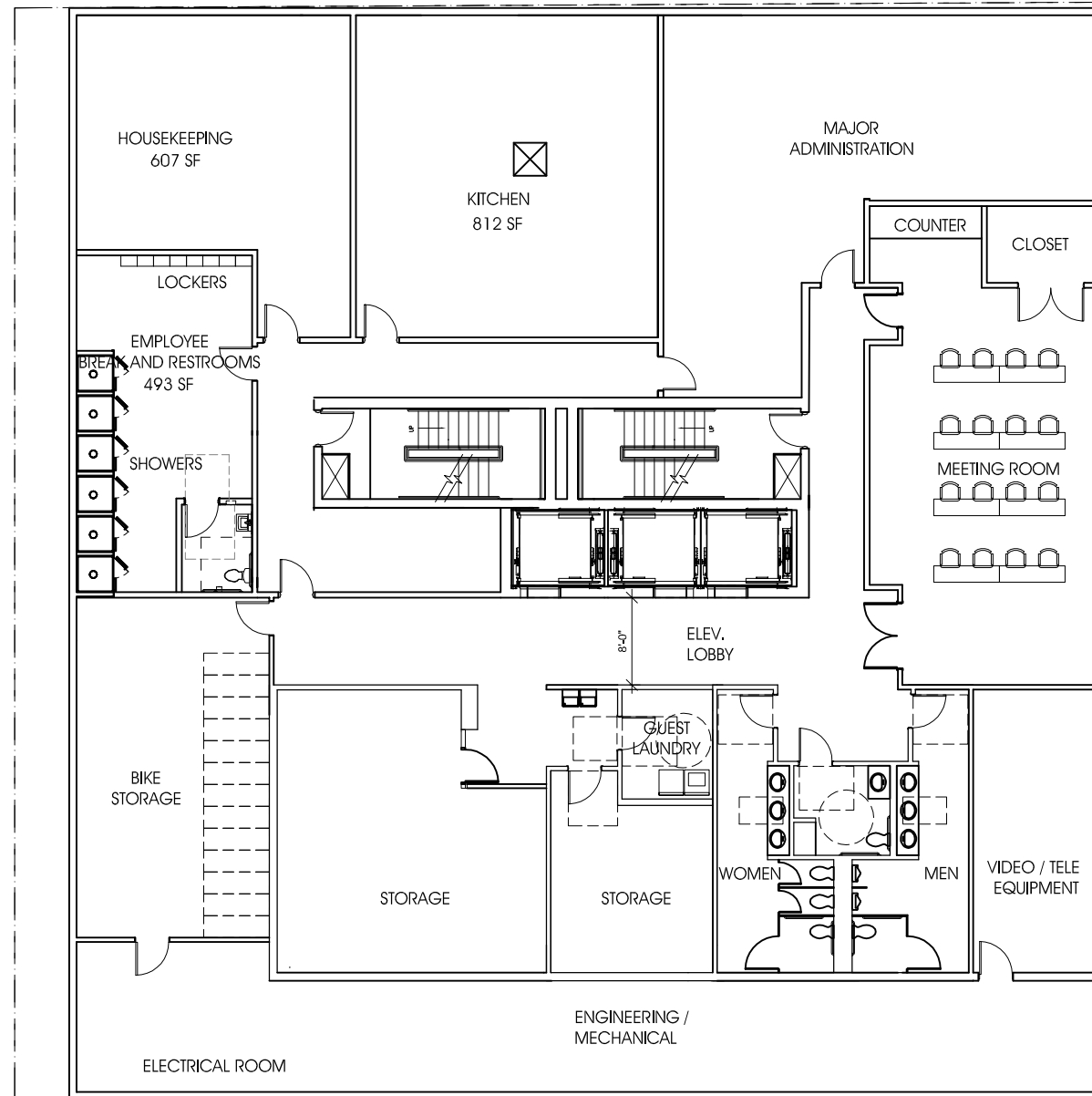
6TH & K HOTEL N.W., WASH. DC
SHEET I A007

SITE PLAN AND DATA TABLE

SCALE: 1" = 20'-0"
DATE: 11.06.2017

Board of Zoning Adjustment
District of Columbia
CASE NO. 19-583
EXHIBIT NO. 442
FILLAT+
ARCHITECTURE

© Copyright 2016. FILLAT + ARCHITECTURE All rights reserved.



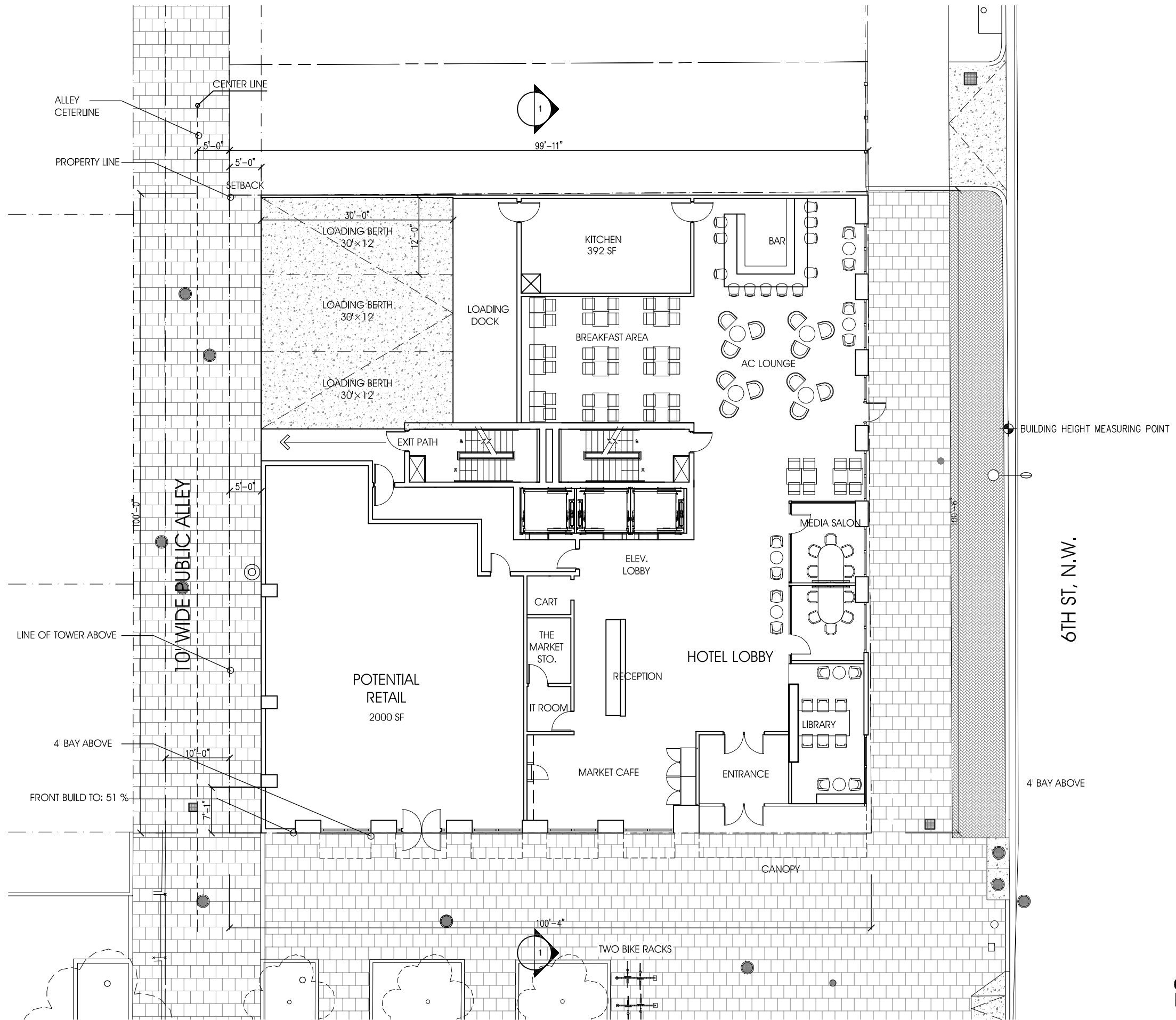
6TH & K HOTEL N.W, WASH. DC
SHEET | A008

CELLAR PLAN

SCALE: 1/16"=1'-0"
DATE: 11.06.2017



© Copyright 2016. FILLAT + ARCHITECTURE All rights reserved.



6TH & K HOTEL N.W., WASH. DC
SHEET | A009

GROUND FLOOR PLAN

SCALE: 1/16"=1'-0"
DATE: 11.06.2017

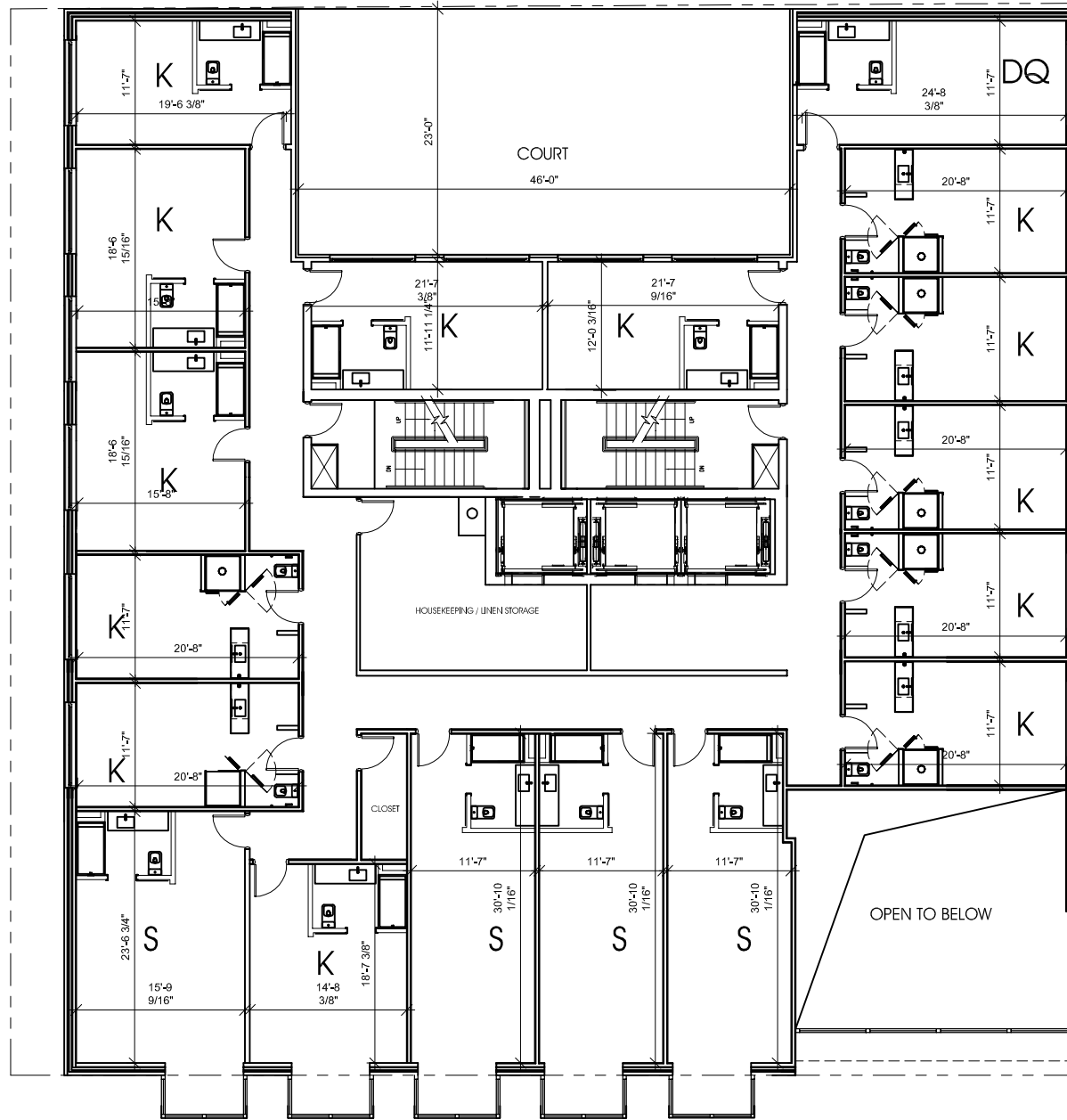
FILLAT+
ARCHITECTURE

© Copyright 2016. FILLAT + ARCHITECTURE All rights reserved.

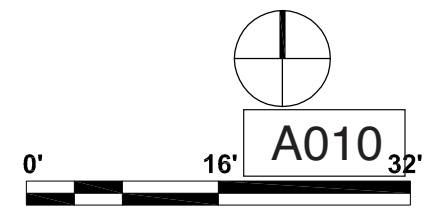


ROOM MIX

2ND FLOOR	16/FLOOR
3RD FLOOR	18/FLOOR
4TH FLOOR	17/FLOOR
5TH -13TH FLOOR	20/FLOOR×19=180 Keys
TOTAL	231 KEYS



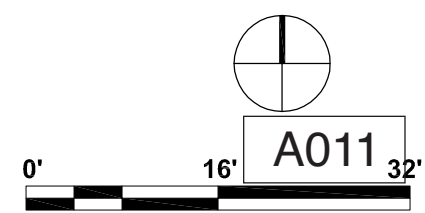
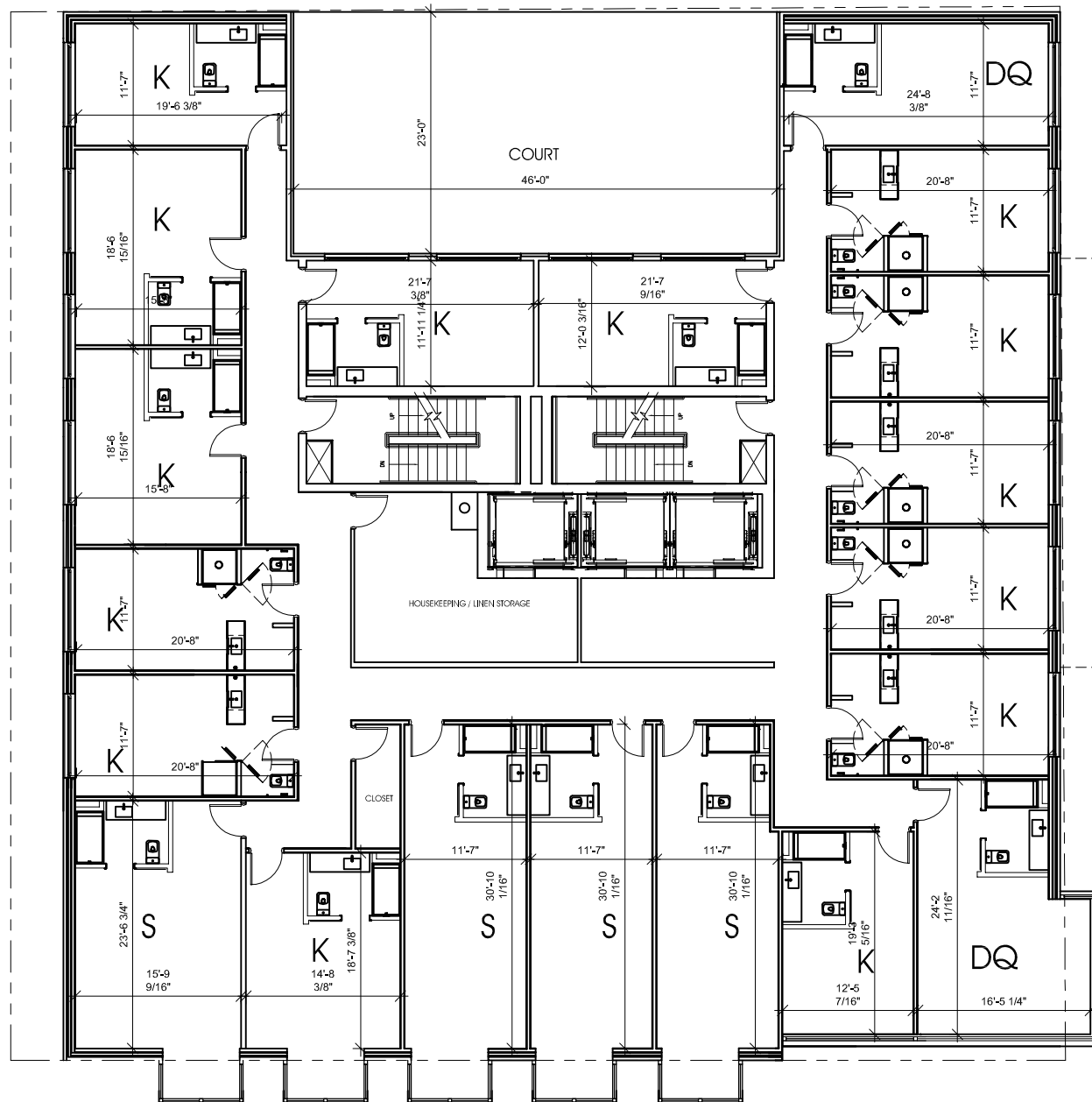
4' BAY ABOVE





ROOM MIX

2ND FLOOR 16/FLOOR
 3RD FLOOR 18/FLOOR
 4TH FLOOR 17/FLOOR
 5TH -13TH FLOOR 20/FLOOR×19=180 Keys
 TOTAL 231 KEYS

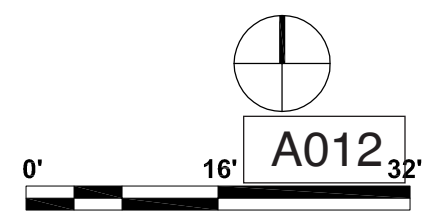
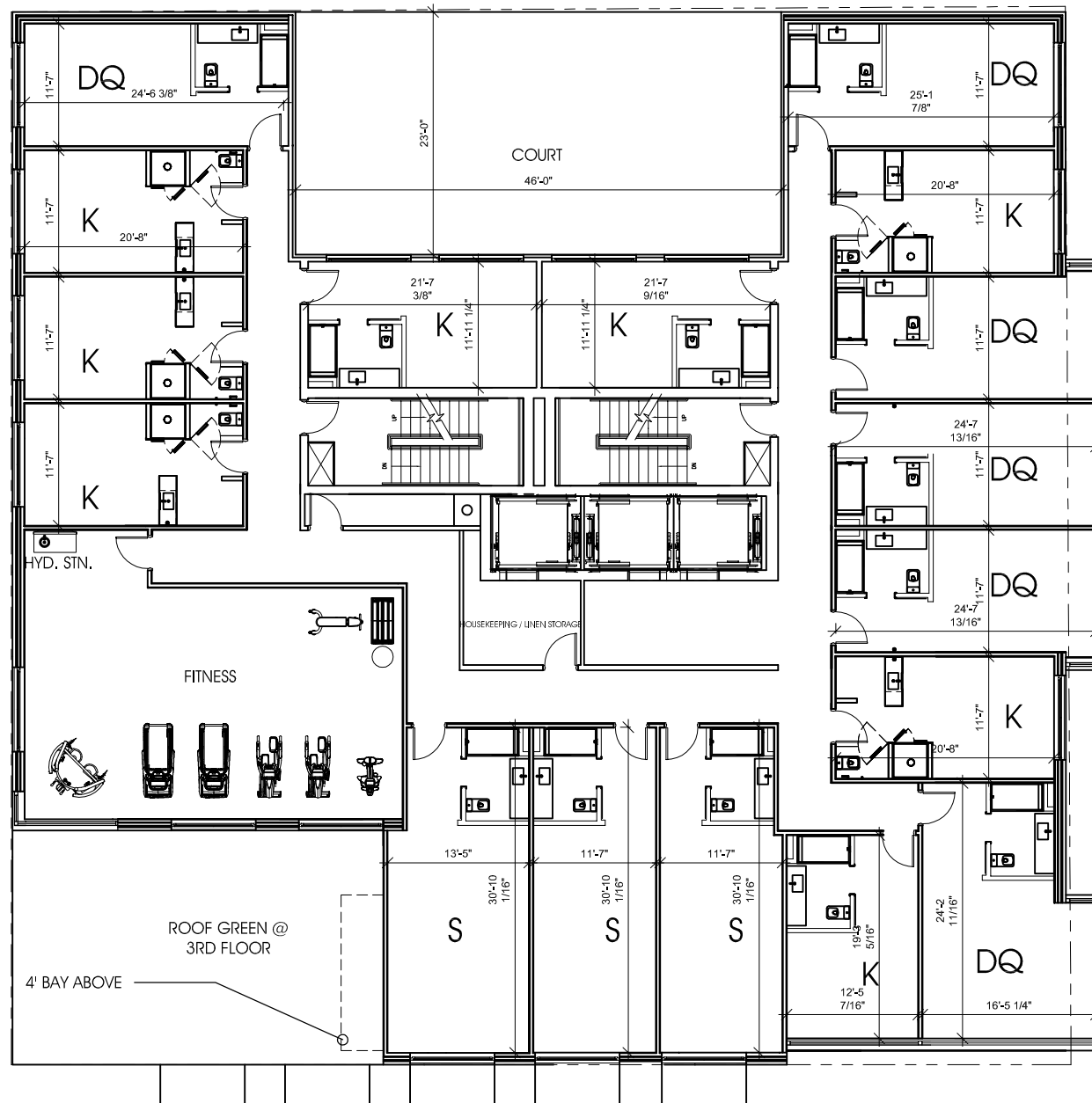


© Copyright 2016. FILLAT + ARCHITECTURE All rights reserved.



ROOM MIX

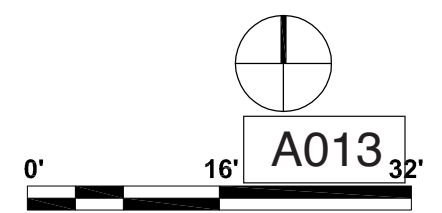
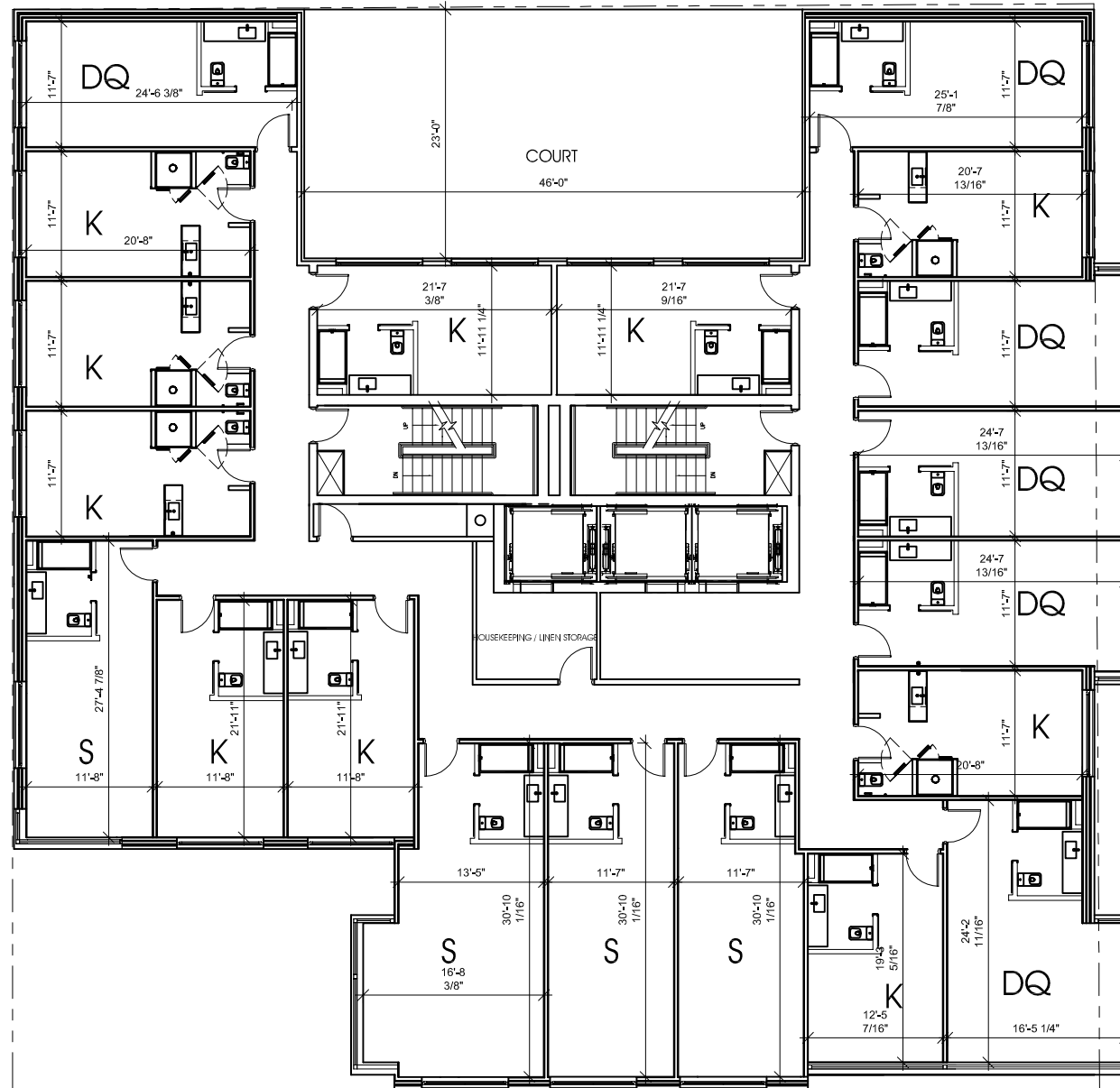
2ND FLOOR 16/FLOOR
 3RD FLOOR 18/FLOOR
 4TH FLOOR 17/FLOOR
 5TH -13TH FLOOR 20/FLOOR×19=180 Keys
 TOTAL 231 KEYS





ROOM MIX

2ND FLOOR	16/FLOOR
3RD FLOOR	18/FLOOR
4TH FLOOR	17/FLOOR
5TH -13TH FLOOR	20/FLOOR×19=180 Keys
TOTAL	231 KEYS



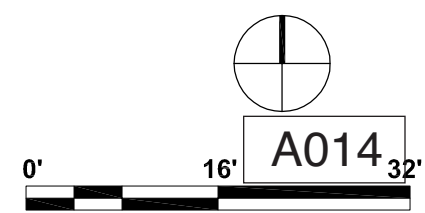
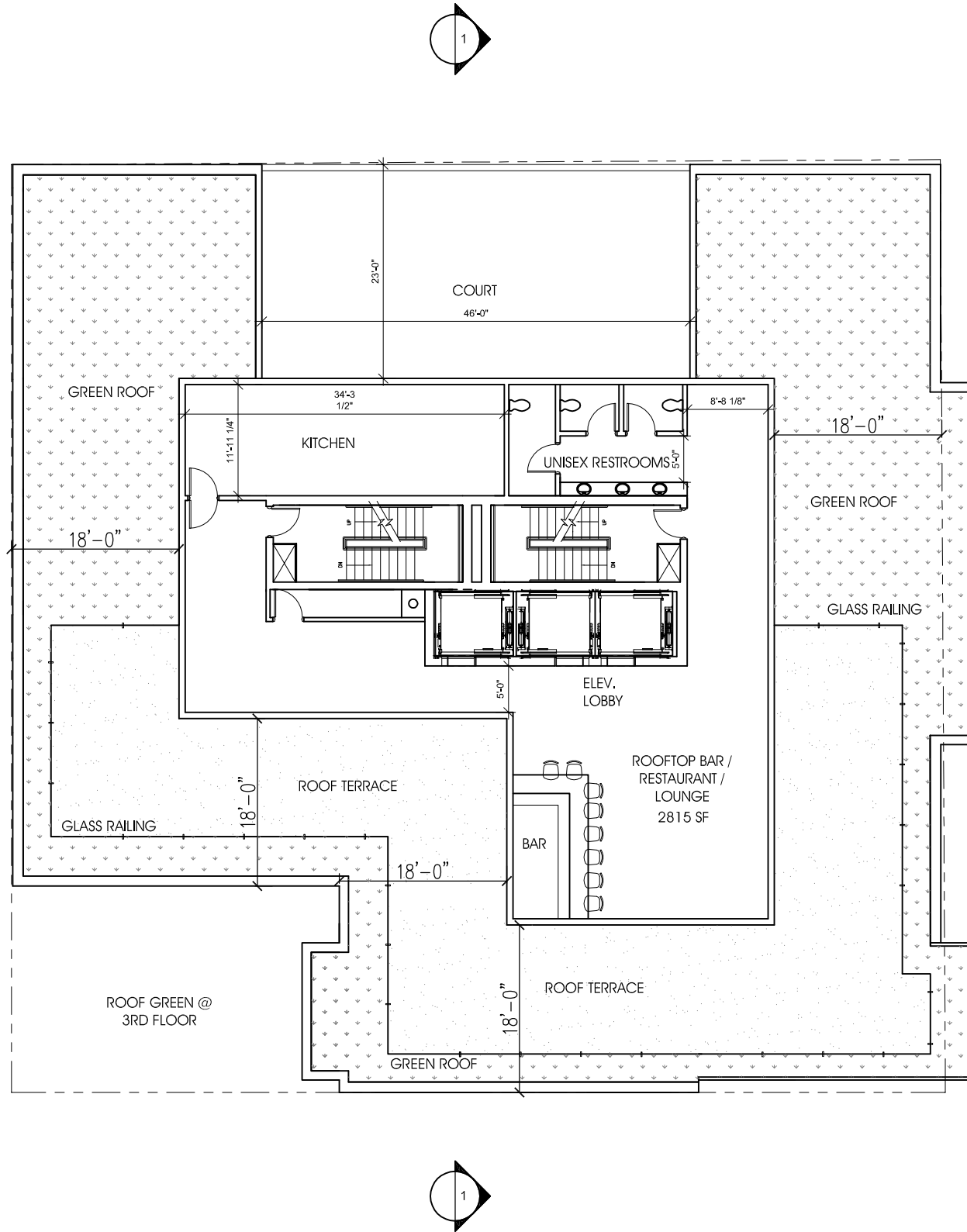
© Copyright 2016. FILLAT + ARCHITECTURE All rights reserved.

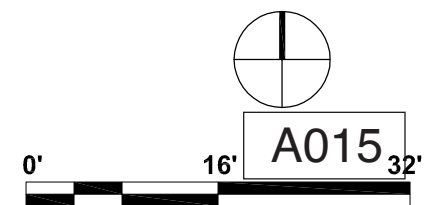
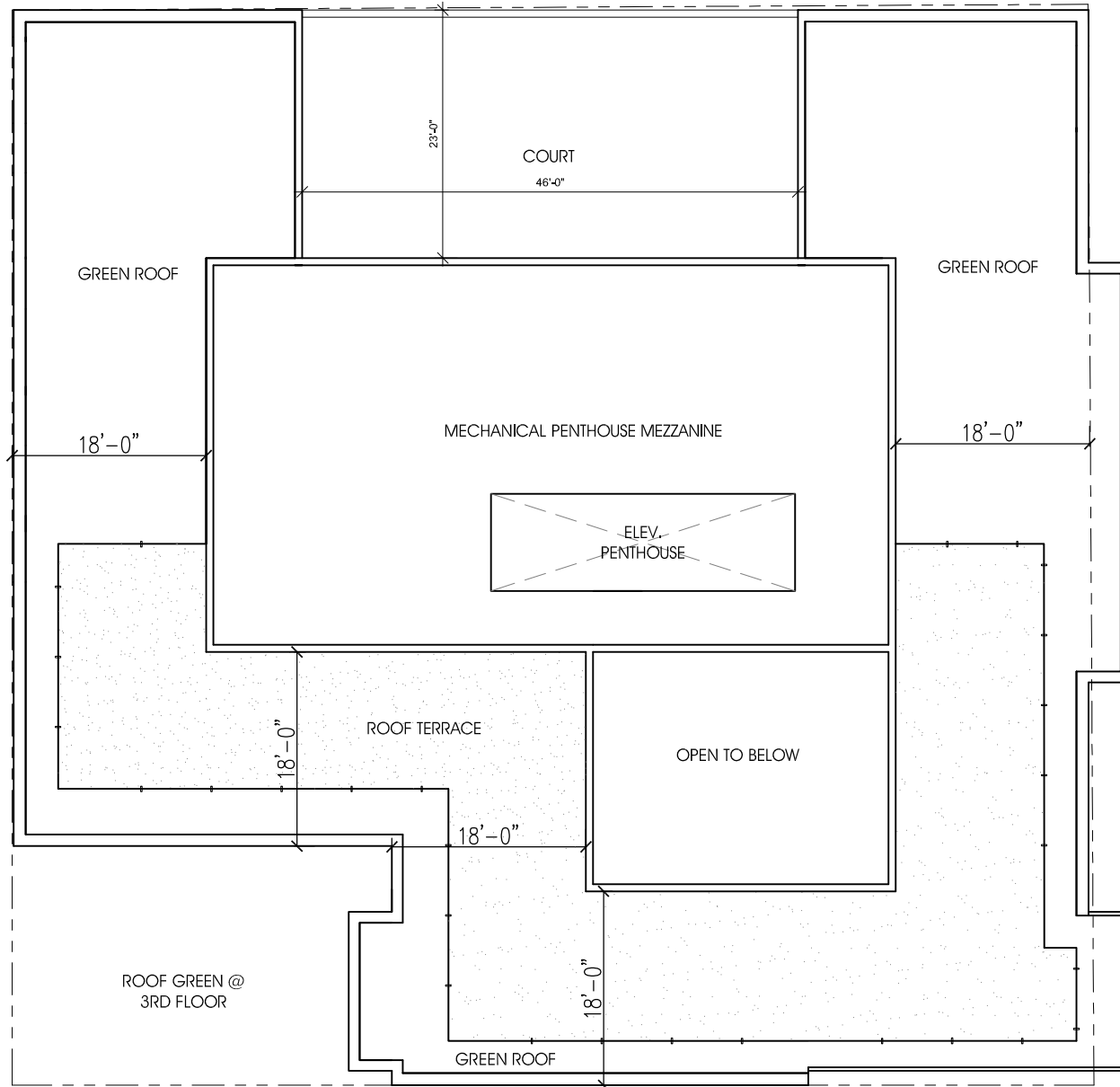
PENTHOUSE AREA SUMMARY

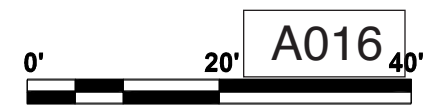
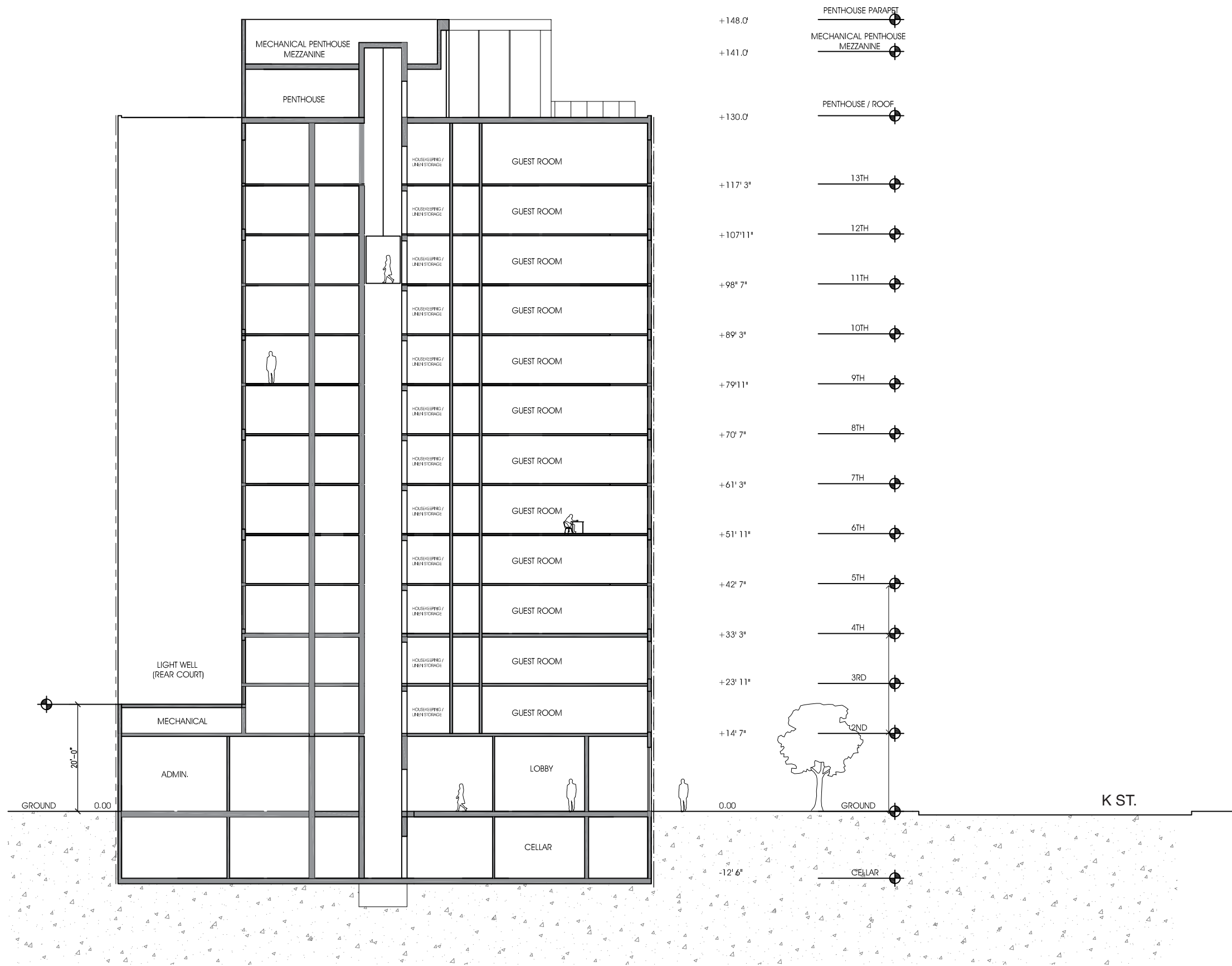
HABITABLE SPACE: 2,815 SF
MECHANICAL: 228 SF
CIRCULATION/EGRESS: 461 SF

GREEN ROOF: 2,719 SF
EXCEEDS GAR BY 7.2 %

NOTE: PENTHOUSE INTENDED
FOR PUBLIC ASSEMBLY USE









BLACK BRICK

GLASS RAILING

BLACK BRICK

INDUSTRIAL WINDOWS

10'

5'

20'

10' PUBLIC ALLEY

6TH ST.

A017

6TH & K HOTEL N.W, WASH. DC
SHEET | A017

SOUTH ELEVATION

SCALE: 1/16"=1'-0"
DATE: 11.06.2017

FILLAT+
ARCHITECTURE

© Copyright 2016. FILLAT + ARCHITECTURE All rights reserved.



6TH ST.

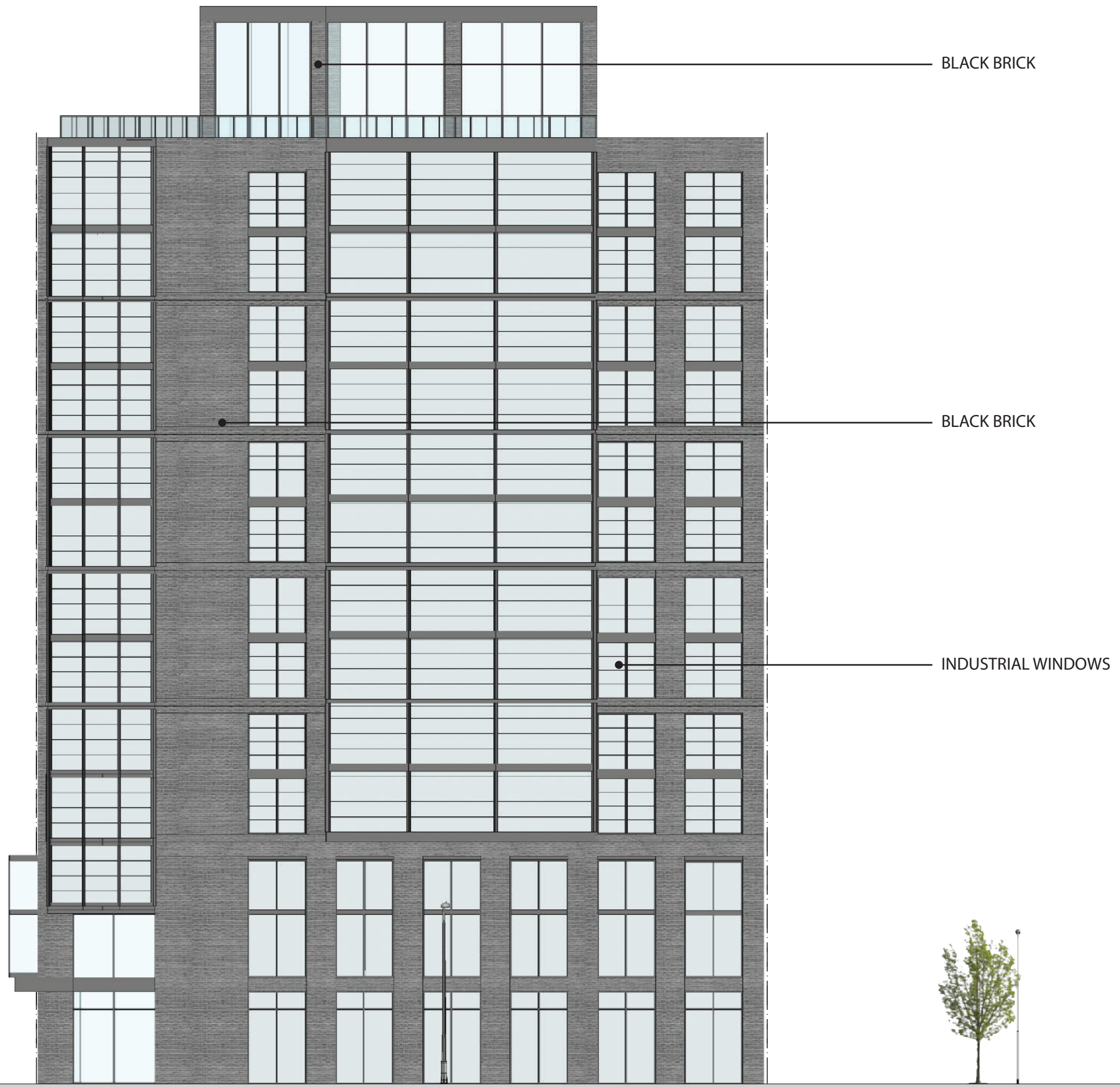
6TH & K HOTEL N.W, WASH. DC
SHEET | A018

NORTH ELEVATION

SCALE: 1/16"=1'-0"
DATE: 11.06.2017

FILLAT+
ARCHITECTURE

K ST.



A019

6TH & K HOTEL N.W, WASH. DC
SHEET | A019

EAST ELEVATION

SCALE: 1/16"=1'-0"
DATE: 11.06.2017

FILLAT+
ARCHITECTURE



BLACK BRICK

BLACK BRICK

INDUSTRIAL WINDOWS

LOW-E GLASS WINDOWS

K ST. A020

6TH & K HOTEL N.W, WASH. DC
SHEET | A020

WEST ELEVATION

SCALE: 1/16"=1'-0"
DATE: 11.06.2017

FILLAT+
ARCHITECTURE

© Copyright 2016. FILLAT + ARCHITECTURE All rights reserved.